

WEST LYNN PRIMARY SCHOOL

St Peters Road, West Lynn,
King's Lynn, Norfolk, PE34 3JL



Telephone 01553 772330

Fax: 01553 772330

office@westlynnprimary.co.uk

www.westlynn.norfolk.sch.uk

Executive Headteacher: Ms J. Borley

Year 3 Homework Challenge - Summer Term 1 2024

We would like children to select one of the homework challenges below for this term, however children can do as many as they wish. This will continue to be run alongside the regular reading and maths/English homework that are set each week.

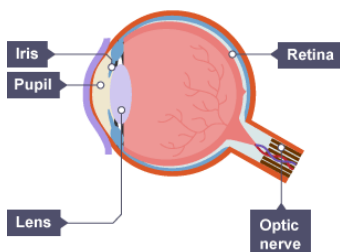
Geography - Japan

Research Japan and share your learning. You might want to create a poster, booklet or leaflet, or a collage of images.



Science - Light and Optics

Create a diagram of the human eye and label it. Can you identify the different parts of the eye? What job does each part have?



History - The War of the Roses

What were the main events during the War of the Roses? You might want to create a poster or story of events, or you might want to create freeze frames and photograph the main events, posing as the key characters!



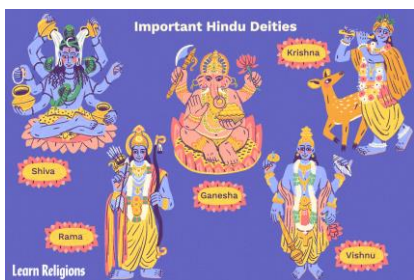
Lancaster Rose



York Rose

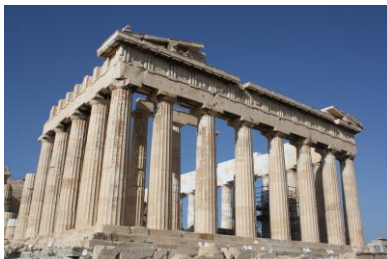
R.E. - Hindu Beliefs

Research the different Hindu gods and write a booklet or factfile sharing what you have learnt.



D.T. - Architecture

Create your own model architecture using recycled materials. You might design from your imagination, or you might be inspired by famous architecture around the world, such as the Parthenon or the Eiffel Tower.



PSHE - Relationships

Draw, label or collage to show the special relationships you have in your life. What do you enjoy doing with each person? What qualities do you show in each relationship? e.g. playful with your friends, helpful with your parents, caring with your siblings



The challenge work is due **Friday 17th May**, with our homework showcase on **Monday 20th May**. Please upload a photo onto Class Dojo and identify which challenge you have completed. We do ask that everyone has a go at this homework so they all have something to share at the end of each term. We thank you for your continued support.