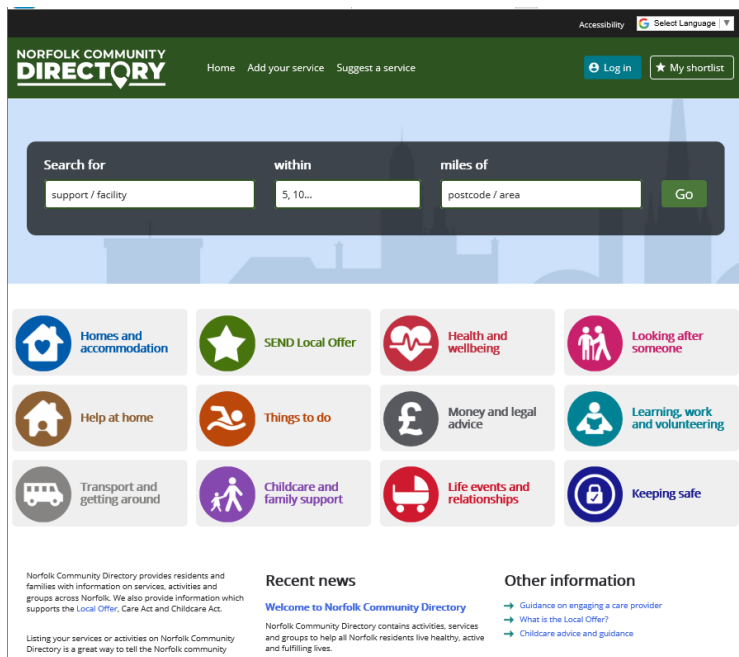


A one-stop website for all the information you need about special educational needs or disability (SEND) in Norfolk
Visit your Local Offer website at norfolk.gov.uk/send

Norfolk Community Directory



The Local Offer website is made up of two parts, the first part are webpages containing information explaining what support is available for children and young people who have SEND and how this is accessed, along with information to support parent carers and guidance on preparing for adult life.

The second part is a searchable on-line directory of service providers ranging from childminders and after school clubs through to specialist short breaks providers and specialist support groups.

Together these describe the "Local Offer".

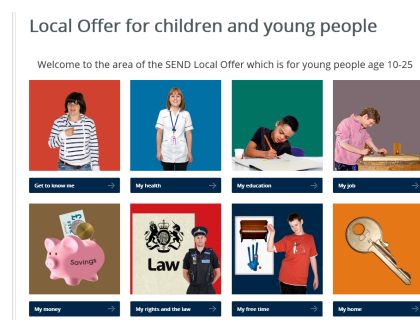
Norfolk County Council have just replaced the system which provides the on-line directory and this is now called the Norfolk Community Directory, it already contains over 3,500 services, but we know that they are many more groups and organisations that support and make their services accessible to children and young people with SEND.

To help make this a really great resource for families could you help us fill in the gaps?

If your child or young person goes to a really good club or group, that makes things accessible for them, see if they are on the directory, if they are not let us (Local Offer team) know and we will speak to the group organisers and help them get in the directory, so that more families can benefit from their service.

Find the directory from the home page of the Local Offer - norfolk.gov.uk/send and please let us know about good services by emailing send@norfolk.gov.uk

Local Offer for children and young people



Over the summer children and young people voted for the friendly web address they wanted for the Local Offer for children and young people.

The winner was mylocaloffer, so to find the website type norfolk.gov.uk/mylocaloffer into your browser!

Dates for your diary

Sample from Support Events [[SEND Local Offer](#) > [About the Local Offer](#) > [SEND Local Offer training, support events and activities](#)]

- Level 1 BSL (Sept - July)
- Sensory Processing workshop: Sensory issues and problem eating patterns (Sept.)
- Is it sensory? (Oct.)
- Ageing with autism (Oct.)

Sample from Things to do [[SEND Local Offer](#) > [About the Local Offer](#) > [SEND Local Offer training, support events and activities](#)]

- Signalong training in Dereham (Oct - Nov)
- Norfolk Boccia open tournament (Nov)
- My First Panto: Jack and the Beansprout (Nov - Jan)

Feedback:

by email: send@norfolk.gov.uk or the feedback form found at
[[SEND Local Offer](#) > [About the Local Offer](#) > [Local Offer news, views and reviews](#) > [Views](#) > [Tell us what you think](#)]