

Walpole Cross Keys Primary School

Weekly Newsletter – 3rd December 2021



This week the weather has turned much colder, please ensure your child comes to school dressed for the weather with **warm outerwear**. Children will be outside for break times unless it is torrential rain.

We are pleased to let you know that we have secured two teachers to work in Class 3 after Christmas. **Mrs Hurn**, who is our Cover Supervisor, will be teaching Mondays and Fridays. **Mrs Mortimer**, who is new to this school but a very experienced teacher, will be teaching Tuesdays, Wednesdays and Thursdays. They will be supported by Mrs Mead, Mrs Loomes and Mrs Wenn.



Could we kindly remind all parents/carers there is no supervision on the playground until **8:45am**, please do not drop your children earlier than this time.

Our school buildings remain closed (access via appointment only) to parents/carers therefore if you have any concerns please contact our school office via phone (**01553 828680**) or email office@walpolecrosskeysprimary.co.uk.

Best Wishes,
Ms J. Borley
Executive Head Teacher

We have Midday Supervisor roles at our West Lynn and Clenchwarton Primary schools, please check the West Norfolk Academies Trust website.

- ♦ Stars: Adam (Yr1), Ava-Grace (Yr3) & all of Class 3
- ♦ Kindness: Ivy.H (YrR) & Ella.K (Yr3)
- ♦ Handwriting: Amelia-Rose (YrR) & Clay (Yr3)
- ♦ Golden Broom: Class 1
- ♦ Thank you winners: Leo (Yr1), Molly (Yr2), Alan (Yr4) & Mrs Mead



Next week

Monday

Yr5/6 JLT meeting 12:30pm-1pm

Yr4/5 recorder lessons

Tuesday

Class 3 Romans Day @ Clenchwarton Primary School

Yrs2-4 multiplication club 12:30-1pm

Wednesday

PTA tuck shop 3:15pm

Thursday

Yrs1-6 gymnastics (PE kits required)

Christmas Lunch (bookings only)

Yr3-6 poetry club 12:30pm-1pm

Friday

Class 1 & 2 PE day

No football club

Attendance

Reception: 94.44%

Year 1: 87.5%

Year 2: 100%

Year 3: 95.83%

Year 4: 87.04%

Year 5: 86.11%

Year 6: 93.65%

Whole school: 92.99%

Congratulations Year 2 (100%)

Attendance bear winners: Class 2

Please check final page
for future diary dates.

Tel: 01553 828680 Email: office@walpolecrosskeysprimary.co.uk
Governors: chairofgov@clenchwartonprimary.co.uk
www.walpolecrosskeysprimary.co.uk



Class Assemblies

Each class would like to invite parents/carers to watch a 'show and tell' class assembly. Due to the current situation regarding Covid we are limiting attendance to 1 parent/carer per family, please see below for dates and times:

Class 1—Wednesday 8th December @ 2:45pm

Class 2—Thursday 9th December @ 2:45pm

Class 3— Friday 10th December @ 2:45pm

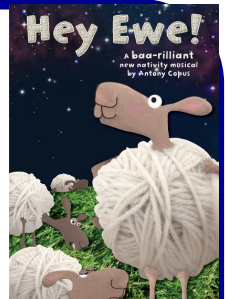
Online forms have been sent via text and email, please ensure you complete the form to let us know whether you are attending. May we kindly request all attendees to wear a mask and to complete their own lateral flow prior to attending.

Hey Ewe!

This year's Christmas Performance "Hey Ewe!" will be performed by Years R, 1, 2 and 3. Rehearsals are starting to take place and the performances will be as follows:

- Tuesday 14th December, 9:30am start
- Wednesday 15th December, 2:00pm start

Due to the current situation with regards to Covid we are limiting attendance to one ticket per family for Class 1 and 2 parents/carers only. Tickets are free, please complete the online form sent to you. We are hoping to video record the performance and share this with you so that nobody misses out on seeing their child perform. The dress rehearsal will take place on Monday 13th December, your class teacher will advise regarding your child's role and the outfit required.



All classes will be having their own Christmas party during the afternoon of Thursday 16th December. This is the day of our whole school panto trip therefore our kitchen will be closed, children may bring a small packed lunch but please bear in mind they will be enjoying party food aswell.

This year, rather than asking parents/carers to send in items of food and drink, we are kindly asking you to donate money via ParentPay. We will then purchase the food and drink from a supermarket. Please make any donations by Friday 10th December.

Thank you

Next week's menu:

LUNCHTIME CO.®

Commencing: 15th Nov, 6th Dec, 10th Jan, 31st Jan, 28th Feb, 21st March

Allergen Key: Barley (B), Celery (C), Egg (E), Fish (F), Gluten (G), Lupin (L), Milk (MK), Mustard (MU), Sesame Seeds (SE), Soya (SO), Sulphites (SU), Wheat (W)

Week 3

Monday

Main Meal

Hot Dog in a Roll served with Potato Wedges, Seasonal Vegetables and Tomato Ketchup
(G) (W) (SU) (SO) (SE)

Tuesday

Mild and Creamy Chicken Curry with Fluffy Rice and Pitta Slice
(G) (W) (MK)

Wednesday

Pasta Bolognese served with Seasonal Vegetables and Garlic Bread
(G) (W) (MK)

Thursday

Christmas lunch main and veg options only
(must be prebooked)
No jacket potato or school packed lunch today

Friday

Cod Fish Fingers served with Chips, Garden Peas and Baked Beans and Tomato Ketchup
(G) (W) (F)

Meat Free

Quorn Dog in a Roll served with Potato Wedges, Seasonal Vegetables and Tomato Ketchup
(G) (W) (B) (MK) (E) (SE)

Cheese & Tomato Pizza served with 1/2 Jacket & Fresh Salad
(G) (W) (E) (MK) (SO)

Vegetable Nuggets served with Chips, Garden Peas and Baked Beans and Tomato Ketchup
(G) (W)

Jackets

Jacket Potato with Cheese and Baked Beans served with Fresh Salad
(G) (W) (B) (MK) (E) (SE)

Jacket Potato with Cheese and Baked Beans served with Fresh Salad
(G) (W) (E) (MK) (SO)

Jacket Potato with Cheese and Baked Beans served with Fresh Salad
(G) (W)

Lunchtime Lunchbox

Cheese Roll
Cheese Straw
Salad Sticks
Fresh Sliced Fruit
Vanilla Crunch
(G) (W) (MK) (E) (SE)

Ham Salad Roll
Pasta Salad
Salad Sticks
Fresh Sliced Fruit
Chocolate Cake
(G) (W) (MK) (E) (SE)

Ham Roll
Chicken Strips
Salad Sticks
Fresh Sliced Fruit
Strawberry Muffin
(G) (W) (MK) (SE)

Desserts

Choose One of Our Fabulous Desserts
Vanilla Crunch
Fruit Yogurt & Coulis
Fresh Fruit
(G) (W) (E) (MK)

Choose One of Our Fabulous Desserts
Lemon Drizzle Cake
Fruit Yogurt & Coulis
Fresh Fruit
(G) (W) (E) (MK)

Choose One of Our Fabulous Desserts
Strawberry Muffin
Fruit Yogurt & Coulis
Fresh Fruit
(G) (W) (E) (MK)

Available every day:

A selection of fresh vegetables and tasty salad

Delicious freshly baked bread

Fruit platter and natural yogurt with toppings



If your child would like a school lunch please order for the whole week using **ParentPay**, the deadline for orders is midnight on Sunday. If you miss the deadline please email the office by 9am on Monday with your child's choices for the week.
Thank you



- ✓ Roman Day (Yrs4/5/6): Today is the deadline to complete consents & make payments via ParentPay.
- ✓ Today is the deadline for you to place any orders

for school photographs.

- ✓ Class assemblies (all years): Please complete the online form sent out on Tuesday.
- ✓ Class Christmas parties (all years): Please make donations via ParentPay no later than Friday 10th December.
- ✓ Hey Ewe! (YrsR-3): Class 1 and 2 families please book your ticket (1 per family) by completing the online form sent out this week.
- ✓ Please ensure your child's PE kit is kept in school all week from Monday to Friday.
- ✓ Order school lunches for the week by midnight each Sunday (ParentPay).

Diary Dates

Please be aware that dates are for guidance only and are subject to change

Tuesday 7th December	Class 3 Romans Day @ Clenchwarton Primary *consents & payments by 3rd December*
Wednesday 8th December	Class 1 (YrsR&1) assembly @ 2:45pm *1 parent or carer per family invited*
Thursday 9th December	Christmas lunch *If you have not ordered a lunch for your child please send a home packed lunch*
	Class 2 (Yrs2&3) assembly @ 2:45pm *1 parent or carer per family invited*
Friday 10th December	*CHANGE OF DATE* Christmas jumper day *children may come to school in a festive jumper, donations to Save the Children on ParentPay*
	Class 3 (Yrs4-6) assembly @ 2:45pm *1 parent or carer per family invited*
Monday 13th December	Christmas play dress rehearsal
Tuesday 14th December	Hey Ewe! 9:30am performance *Class 1&2 parents invited—1 ticket per family*
Wednesday 15th December	Hey Ewe! 2:00pm performance *Class 1&2 parents invited—1 ticket per family*
Thursday 16th December	All years Beauty and the Beast pantomime King's Lynn Corn Exchange 10am *kitchen closed—home or school packed lunch only*
	Class Christmas parties *monetary donations via ParentPay please*
Friday 17th December	Last day of school *children may come in non uniform and bring a toy—no electronics please*
Monday 20th December to Monday 3rd January	School Closed—Christmas Break
Tuesday 4th January	School Closed—Inset Day